



**South Central**  
COLLEGE



MINNESOTA STATE

# **South Central College Workforce Development**

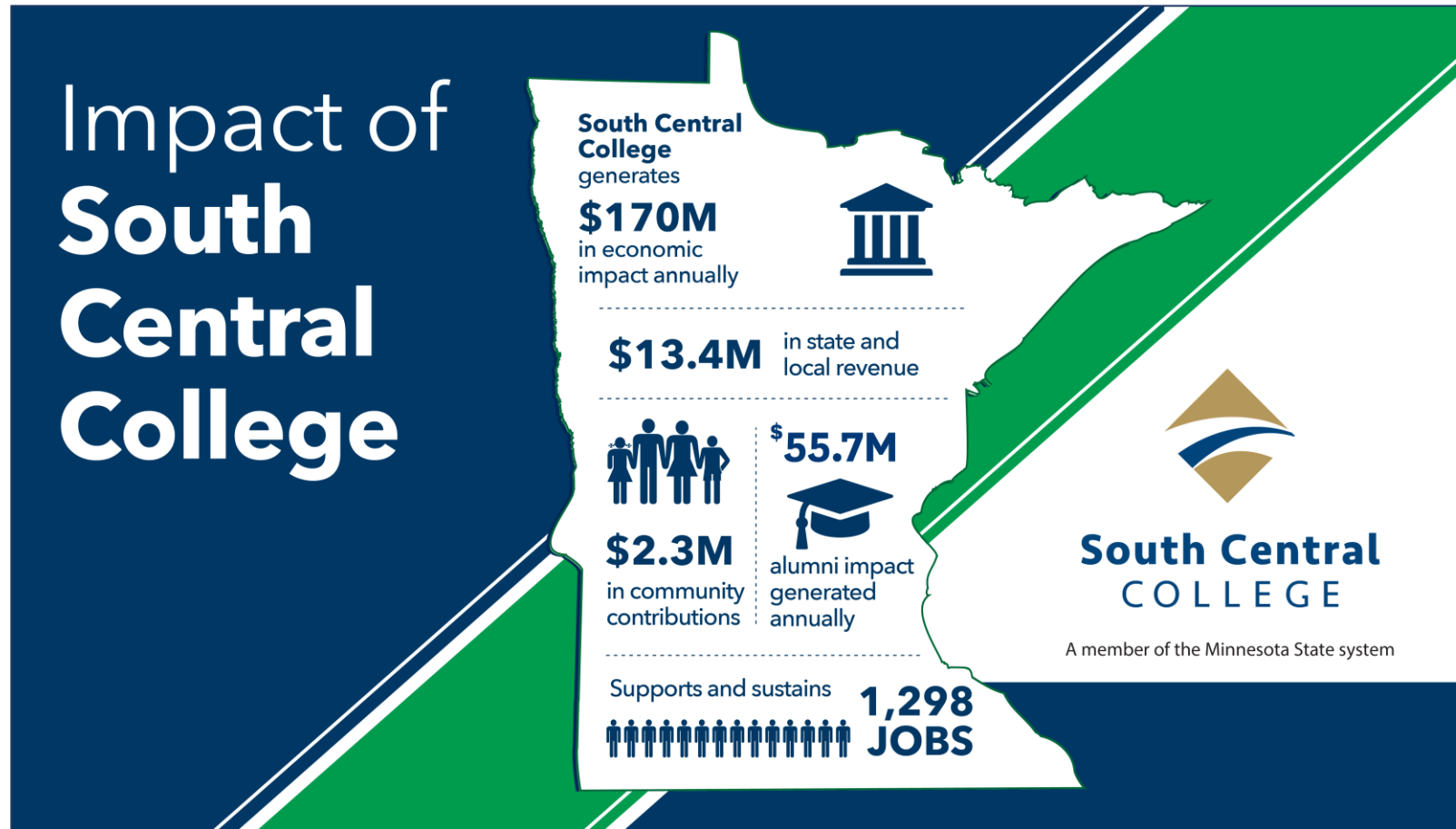
Dr. Annette Parker, President

# Mission

South Central College provides an accessible and inclusive learning environment that cultivates student success and advances regional economic development.



# Economic Impact



# Areas of Work

## **Academic Programs – approximately 4,300 students annually**

- 100+ career-ready award and degree options that lead to a rewarding career immediately after graduation
- 20+ pre-bachelor's transfer programs for those whose career aspirations require a 4-year degree

## **Customized Workforce Education – approximately 10,000 students annually**

- Specialized, short-term training and professional development



# Industry Workforce Partnerships

1. **Program Industry Advisory Committees**
2. **Industry-recognized Credentials**
3. **Internships**
4. **Apprenticeships and Dual-Training**
5. **MJSP Grants**
6. **SCC Foundation Support**



# 1. Program Industry Advisory Committees

- New model BILT (Business & Industry Leadership Teams)
- Employer-led with leaders from industry and SCC working together to facilitate conversations
- Discussion about skills employees will need several years from now, so we can start planning for future programs
- 5 programs have implemented the BILT model with more this spring

## 2. SCC Industry-recognized Credentials

Cert/Exam	SCC	Credits
Manufacturing Skill Standard Council(MSSC) Safety	CMAE1514	2
MSSC Manufacturing Processes and Production	CMAE1518	2
MSSC Quality Practice & Measurement	CMAE1522	2
MSSC Maintenance Awareness	CMAE1526	2
ServSafe Certification	CULN1101	2
GOLD® Interrater Reliability Certification, Preschool/Pre-K	CDEV2210	2
Creative Curriculum 5th Edition	CDEV1312	3
Commercial Driver's License	AGBS2015	1
NIMS CNC Mill Operations	MTT 1110	5
NIMS CNC Lathe Operations	MTT 1120	5
NIMS Job Planning, Benchwork & Layout	MTT 1130	3
NIMS Measurement, Materials & Safety	MTT 1140	3

CompTIA A+ Certification (2 Exams)	COMP1200	4
CompTIA A+	COMP1200	4
CompTIA Net+	COMP1360	4
LPI Linux Essentials	COMP2460	4
CompTIA Linux+	COMP2460	4
VMware Certified Professional (VCP)	COMP2453	4
AWS Certified Cloud Practitioner	COMP2456	4
Microsoft 70-740: Installation, Storage, and Compute with Windows Server 2016	COMP2462	4
Microsoft 70-741: Networking with Windows Server 2016	COMP2462	4
Cisco CCNA or Cisco CCENT	COMP1360 COMP2466	4
Cisco CCNA Routing & Switching	COMP1360 COMP2466	4

### 3. Internships

- Short-term, typically 8-12 weeks
- Opportunity to get a “taste” of the industry
- SCC encourages that these be paid learning experiences
- Student earns credits upon completion
- Student learns entry-level skills through on-the-job training



## 4. Apprenticeships and Dual-Training

- Long-term, typically 6 months - 2 years
- Student is a paid employee (PT/FT) with a progressive pay scale
- Student earns an academic degree, industry credential or journey worker card upon completion
- Defined on-the-job training plan allows student to apply technical skills in the field
- Funding to support companies through MN Pipeline Project - Since 2016, employers in our region have been awarded over **\$2.2 million in grants** to support students pursuing education in manufacturing, health sciences and agriculture

## 5. Minnesota Job Skills Partnership (MJSP)

- Customized Workforce Education partners with employers who receive MJSP grants to fund training in their workplaces
- 69 employers have received more than **\$7.5 million** in MJSP grants in partnership with SCC since 2000

## 6. SCC Foundation Support

**Industry contributions allow us to do more with our Legislative Funding!**

- **Scholarships**

- Foundation Scholarships: \$500,000 from SCC Foundation Annually
- Legislative Scholarships: Minnesota Workforce Development Scholarships, North Star Promise Scholarships

- **Equipment**

- Leveraged Equipment Funding
- Equipment and Learning Environments Funding

- **Building Project Support:**

- 2017 Bonding Project: Nearly **\$1 million** in industry support
- 2024 Proposed Bonding Project: Nearly **\$1 million** in industry support to date, including Bolton & Menk Infrastructure Solutions Lab and River's Edge Hospital Surgical Technology Lab

# K-12 Workforce Partnerships

1. **Postsecondary Enrollment Options (PSEO)**
2. **iMEC 2.0 Mechatronics**
3. **High School Academies**
4. **H2C**
5. **Career Exploration**
6. **National CTE Letter of Intent Signing Day**

# 1. Postsecondary Enrollment Options (PSEO)

- College credit while in high school resulting in quicker entrance into the workforce
- SCC campus or in the high school
- 471 students in 2023-24

## 2. iMEC 2.0 for Mechatronics

- NSF grant funded
- Mechatronics faculty provided training to high school teachers to facilitate a distance learning model
- 6 high schools participating, with each receiving \$15k in equipment



### 3. High School Academies

- **Health Care Academy**  
150 students from 11 school districts participate
- **Information Technology Career Academy:**  
15 students from 4 school districts participate

## 4. H2C – High School to College and Career

- “P-TECH” model from IBM Rochester
- Students in 10 – 12th grades can simultaneously complete their high school diploma, and industry certificates and start college
- Students may earn up to 36 college credits while in high school
- Started in Fall 2021 at Faribault High School, with SCC partnering with Faribault Public Schools, Faribault Chamber and area employers
- Since Fall 2021, 200+ students participating in our Health Sciences H2C program
- Since Spring 2023, 30+ students participating in our Manufacturing, Engineering and Construction H2C program



## 5. Career Exploration

- **Trades Trailblazers:** YWCA program for kids in grades 6 - 8
- **Career Navigator:** 15,000 Ninth graders served since 2017
- **High School Campus Tours:** Dozens of group tours each year
- **Career and College Fairs:** Numerous throughout region



### 3 Events in 1 Day Last Friday:

- Faribault Works Career Expo
- Career Navigator
- Ag-Tech Reverse College Fair

## 6. National CTE Letter of Intent Signing Day

- 9<sup>th</sup> Annual Signing Day February 27 in Faribault and February 28 in North Mankato
- Honors future students pursuing career and technical education (CTE) programs at SCC in the Fall.
- Every participant receives an SCC Foundation Scholarship of \$500 or more
- Some participants receive a Minnesota Workforce Development Scholarship of up to \$2,500



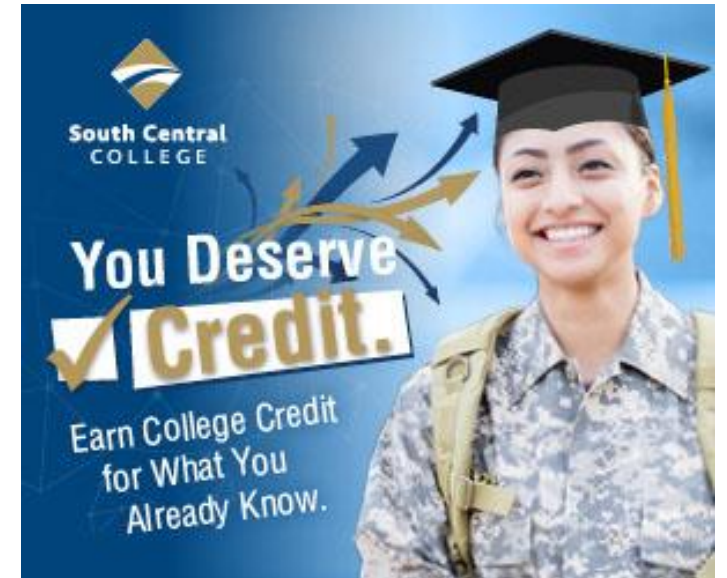
# Opportunities for Adult Learners

1. **Credit for Prior Learning**
2. **Adult Basic Education and CareerForce Partnerships**
3. **Uniquely Abled Academy**



# 1. Credit for Prior Learning (CPL)

- Academic credit awarded for college-level knowledge gained outside the classroom
- Military, workplace, community-based, self-study
- Assessed by qualified faculty in the discipline
- Saves time and money toward completing credential or degree
- In the past 11 years, **622 students** have earned a total of **4,794 credits** through CPL






## 2. Adult Basic Education and CareerForce Partnerships

### Bridge Programs

**SCC CONNECTS**  
Get ready to start a South Central College Healthcare Program:

- Medical Assisting
- Nursing Assistant (CNA)
- Medical Laboratory Technician
- Phlebotomy
- Dental Assisting
- Health Unit Coordinator
- Practical Nursing (LPN)
- Professional Nursing (RN)
- Intensive Care Paramedic Technician

**YOU TO Healthcare CAREERS**  
  
**SCC Connects is a FREE program that connects future SCC students to:**

- A course to get you ready for college (computer use, reading and career exploration)
- College application and registration assistance
- Guidance navigating the college computer system
- Financial Aid/FAFSA
- Grants and Scholarships
- College classroom support (Tutoring)
- Financial help with books, tuition, supplies and equipment

**FALL** **SCC Connects Classes:**  
Mondays, Wednesdays, Thursdays  
October 23 – December 11  
8:00 a.m. – 10:00 a.m.  
**Call Adult Education today at (507) 345-5222**  
[www.southcentral.edu/connects](http://www.southcentral.edu/connects)

A proud partner of the American Job Center Network, South Central College is an affirmative action, equal opportunity employer and educator. This document is available in alternative formats to individuals with disabilities. Call (507) 345-5222 for more information or contact us via our preferred Telecommunications Relay Service.

North Mankato Campus

**SCC CONNECTS**  
Get ready to start a South Central College Manufacturing Program:

- Machine Tool Technology
- Mechatronics
- HVAC/R
- Auto Body and Collision
- Welding

**YOU TO Manufacturing CAREERS**  
  
**SCC Connects is a FREE program that connects future SCC students to:**

- A course to get you ready for college (math, reading and career exploration)
- College application and registration assistance
- Guidance navigating the college computer system
- Financial Aid/FAFSA
- Grants and Scholarships
- College classroom support (Tutoring)
- Financial help with books, tuition, supplies and equipment

**FALL** **SCC Connects Classes:**  
Fridays  
November 10 – December 15  
7:00 a.m. – 1:00 p.m.  
**Call Adult Education today at (507) 345-5222**  
[www.southcentral.edu/connects](http://www.southcentral.edu/connects)

A proud partner of the American Job Center Network, South Central College is an affirmative action, equal opportunity employer and educator. This document is available in alternative formats to individuals with disabilities. Call (507) 345-5222 for more information or contact us via our preferred Telecommunications Relay Service.

Faribault Campus

**SCC COLLEGE & CAREER PREP ACADEMY**  
**INFORMATION SESSIONS**

College and Career Prep Academy (CCPA) is a program that helps prepare you to Enter into college OR Enter the workforce.

College and Career Prep Academy (CCPA) is a great opportunity offered in collaboration with Faribault's Adult Basic Education!




This FREE program is designed to help students enter the workforce OR transition to South Central College (SCC) successfully and reach their academic and career goals! The Career Pathway Program currently supports the areas of:


**MANUFACTURING**  
Carpentry, Welding, Machining and Mechatronics.

**HEALTHCARE**  
Nursing Assistant (CNA), Health Unit Coordinator (HUC), Phlebotomy, Medical Assistant (MA), Practical Nursing (LPN), Professional Nursing (RN), and more!

**OTHER COLLEGE MAJORS**  
Pre-Social Work, Early Childhood Education, Computer Careers and more!

CCPA is divided into three parts (On-ramp, Bridge and Integrated) and students will transition to being fully independent at SCC by the end of the Integrated portion of the program.

**Scan to Register for a Session**  
  
<https://forms.office.com/V3C3b07f6d>



**Andrea "Drea" Calderon**  
Adult Learner Transition Coordinator  
**Contact (hablo español)**  
507-345-7458  
[andrea.calderon@southcentral.edu](mailto:andrea.calderon@southcentral.edu)




If you cannot attend or have questions, please contact:

**DATE & TIMES**  
**Tuesday, October 24, 2023**  
9:00 a.m. – 12:00 p.m. OR 5:00 p.m. – 8:00 p.m.  
South Central College, Faribault Campus, B100

Please note: No childcare will be provided. Parents should make childcare arrangements as we are unable to accommodate children during meetings.

**SCC was awarded \$423,053 in Title III funds for 2023-2024.**

A proud partner of the American Job Center Network, South Central College is an affirmative action, equal opportunity employer and educator. This document is available in alternative formats to individuals with disabilities. Call (507) 345-5222 for more information or contact us via our preferred Telecommunications Relay Service.



### 3. Uniquely Abled Academy (UAA)

- Training young adults with autism for careers
- Offering our 3rd Computer Numeric Controller (CNC) session this summer
- Supported in part by DEED-Vocational Rehabilitation Services and Minnesota Department of Human Services
- Working on developing a Print Press Operator UAA program in partnership with Taylor Corporation
- Partnering with South Central Service Coop (SCSC) to provide high school students in special education hands-on learning opportunities while introducing UAA to potential future students



# Other Grant Funding

- U.S. Department of Education Title III Grant for Adult Learner Pathways
- USDA Grant for Advanced Agriculture Technician
- U.S. Department of Education FIPSE Grant for Mechatronics Training
- Metallica “All Within My Hands” Foundation Grant for “Metallica Scholars”





**South Central**  
COLLEGE



MINNESOTA STATE

**Thank You**