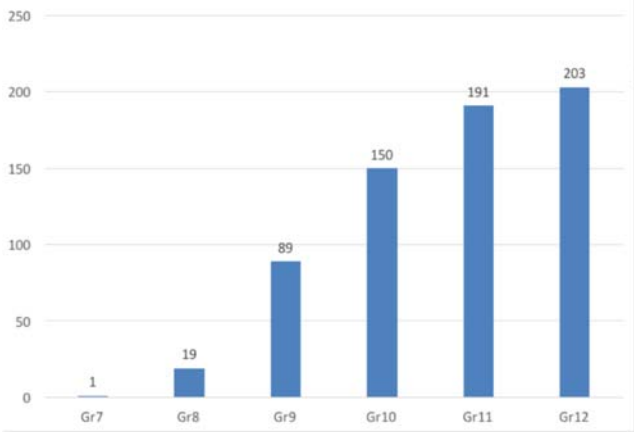
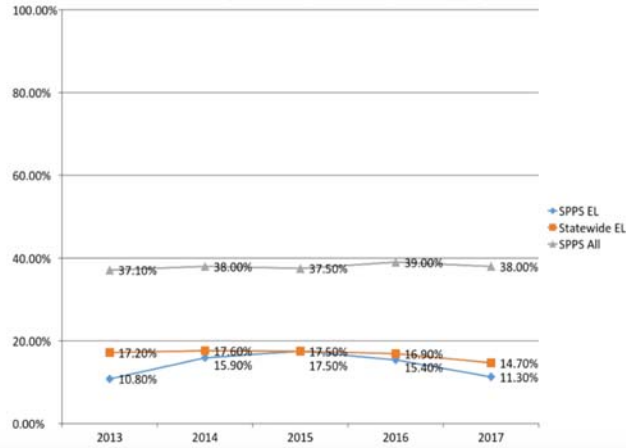


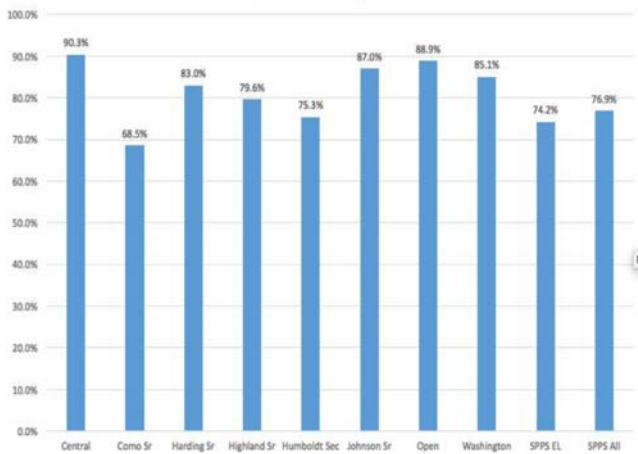
SPPS SLIFE Count October 2017



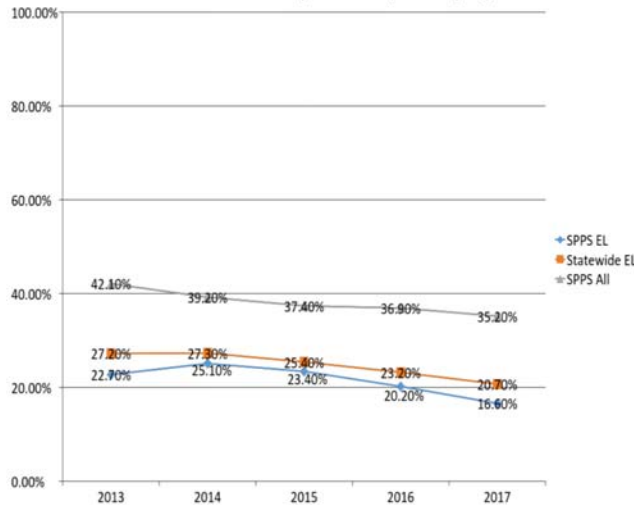
SPPS EL MCA Reading Proficiency Trend Comparison Spring 2013-17



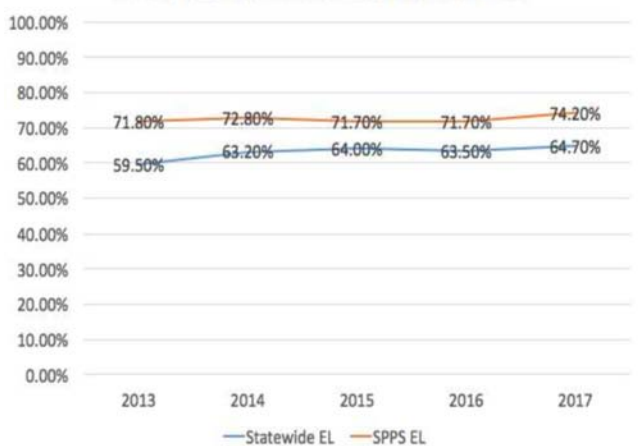
SPPS EL Graduation Rate by School 2017



SPPS EL MCA Math Proficiency Trend Comparison Spring 2013-17



SPPS vs Statewide EL Graduation Trend 2013-2017



Programs and Services for English Learners

Office of Multilingual Learning

“English language learners are in fact emergent bilinguals. That is, through school and through acquiring English, these children become bilingual, able to continue to function in their home language as well as in English, their new language and that of schools.”

Garcia, O., Kleifgen, J., & Falchi, L. (2008). From English Language Learners to Emergent Bilinguals. *Equity Matters: Research Review No. 1*. Teachers College, Columbia University.

Saint Paul Public Schools
360 Colborne Street, Saint Paul, MN 55102

Dr. Yeu (Ntxawm) Vang
Office of Multilingual Learning
Office: 651-767-8320 | Fax: 651-744-6330
www.spps.org/ml



English Language Programs

English learners bring a wealth of knowledge to our schools. SPSS strives to honor and learn from the linguistic and cultural capital that students and their families bring to the school community.

The Saint Paul Public Schools EL program promotes an inclusion model in which learners acquire English through participation in age-appropriate, academic content that is driven by state standards. The teaching of English through academic content requires language instruction that is aligned with and integrated into grade-level curriculum.

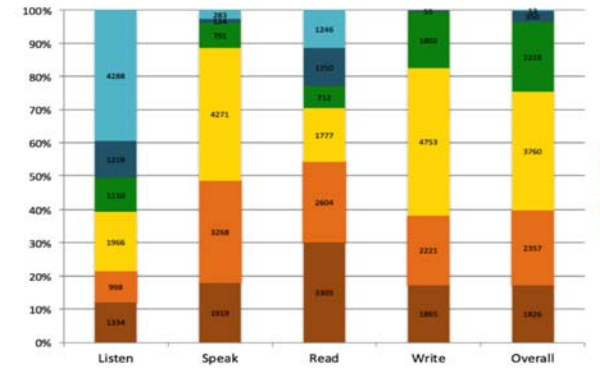
Language Academy

SPSS offers the Language Academy (LA) program for students who are new to the country. LAs provide intensive language and content instruction to students in beginning English proficiency stages. LAs are located in 10 elementary school sites and 7 secondary school sites.

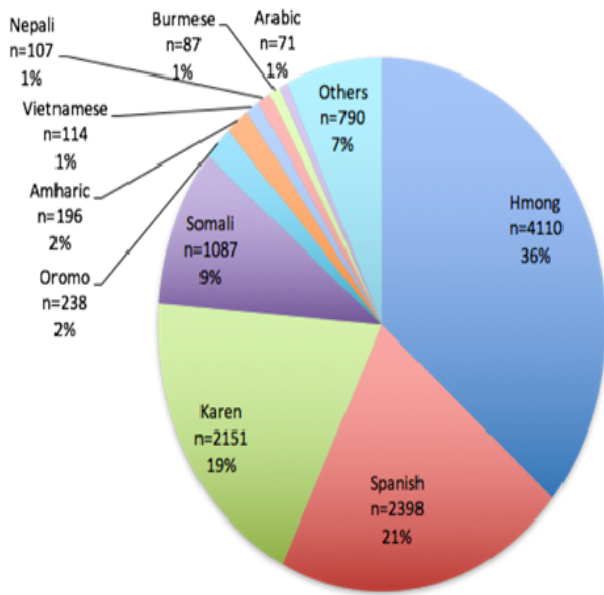
Language & Culture Programs

The Office of Multilingual Learning provides support in language and culture through Hmong & Somali Enrichment Programs and classes.

ACCESS Performance Spring 2017



SPSS EL Top 10 Home Languages Fall 2016



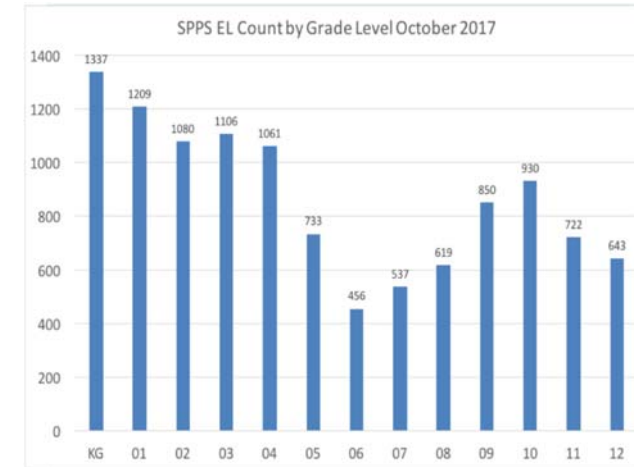
Saint Paul Public School EL Facts:

- SPSS has the highest number of English Learners (ELs) in the state of MN
- 11,400 students; 31% of the overall SPSS student population are ELs
- A total of 129 languages are identified among SPSS students
- Top 4 languages in SPSS are Hmong, Spanish, Karen and Somali

Saint Paul Public Schools EL Service Model • Grades K-5 • 2015 - 2016 (Revised)

Reader's Workshop, Writer's Workshop, Math, or Science				
Level	Mini-lesson	Small Group Academic English Language Development (AELD)	English Now! A/B	Imagine Learning
Lv 1	Co-taught 15 minutes	4-5 days a week 20-30 minutes per session	English Now! A/B 30 minutes 5 days per week	Dual Language EL Students 30 minutes 4/5 days per week
Lv 2		3-5 days a week 20-30 minutes per session		
Lv 3		2-4 days a week 20-30 minutes per session		
Lv 4		2-3 days a week 20-30 minutes per session		
Lv 5		1-2 days a week 20-30 minutes per session		

Key	Highly Recommended area of EL support	English Now! A/B	Imagine Learning
-----	---------------------------------------	------------------	------------------



Saint Paul Public Schools EL Service Model • Grades 9-12 • 2016 - 2017 (Revised)

Level	English Language Arts	Science	Social Studies	Math*	Advisory
Lvl 1 Language + Academ y	EL 1.1: Language & Literacy (double block) E421011	EL 1.5: Language through Science E400011	EL 1.4: Language through Geography E400011	EL Math Foundations* M401131 (1 semester)	Language Development in Advisory
Lvl 2 Language + Academ y	EL 1.5.L: Language & Literacy (double block) E401911	1.5.S: Language through Science E401911	1.5.H: Language through Social Studies E401911	Pre-Algebra* M401141 (1 semester)	Language Development in Advisory
Lvl 2.5/3	ELA 9 w/ Lang Dev (double block) L407301 EL 2L	Physical Science w/Lang Dev S402101 EL 2S	World History w/Lang Dev H403401 EL 2H	Algebra* w/ Lang. Development M403111 Math Teacher	Language Development in Advisory
Lvl 4	ELA 10 w/ Lang Dev (double block) L407311	Science co-taught S402101 ELD Support E401261	EL 3H: Human Geo w/Lang Dev H403411	Math co-taught M401261 ELD Support E401261	Language Development in Advisory ELD courses are directly tied to a particular content course.
Lvl 4	1 Co-taught Content Course				Language Development in Advisory
Lvl 4	1 Co-taught Content Course				Language Development in Advisory
KEY	EL services provided in sheltered classes are comprised of EL students only; taught by an EL teacher unless otherwise noted			EL services provided in a co-taught setting with an EL teacher and a content teacher	

Figure 4. EL Service Model Grades 9-12

