



EAST PARK: PRELIMINARY PLAN

NEIGHBORHOOD CONNECTIONS



EXISTING AGRICULTURAL LAND

RETAIN EXISTING WINDBREAKS

PARKING & TURNAROUND

FUTURE PARK DEVELOPMENT AREA

- PLAYGROUND
- PICNIC SHELTER
- OPEN LAWN

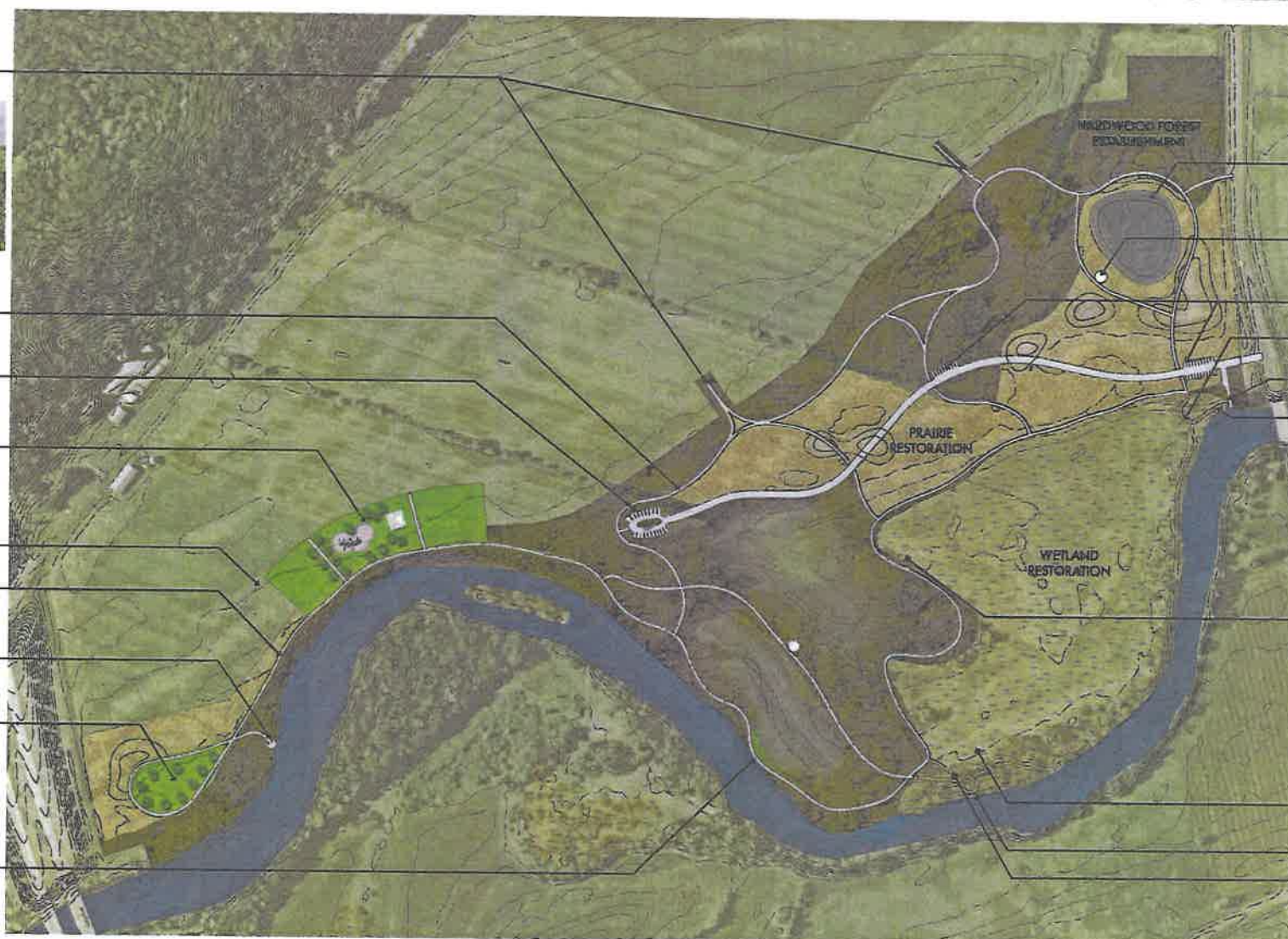
POTENTIAL FUTURE RESIDENTIAL PARCELS

HARD TRAILS

RIVER TOUCH POINT / ACCESS

FUTURE DOG PARK

RIVER TOUCH POINT / ACCESS



PRAIRIE POTHOLE

PRAIRIE CLASSROOM

PARKING

BOARDWALK

DNR-APPROVED BOAT LAUNCH

FISHING PIER / OVERLOOK



VIEW UPRIVER FROM PROPOSED FISHING PIER BIRD BLIND



EXISTING WETLANDS FLOODPLAIN FOREST CLASSROOM

FISHING PIER / OVERLOOK

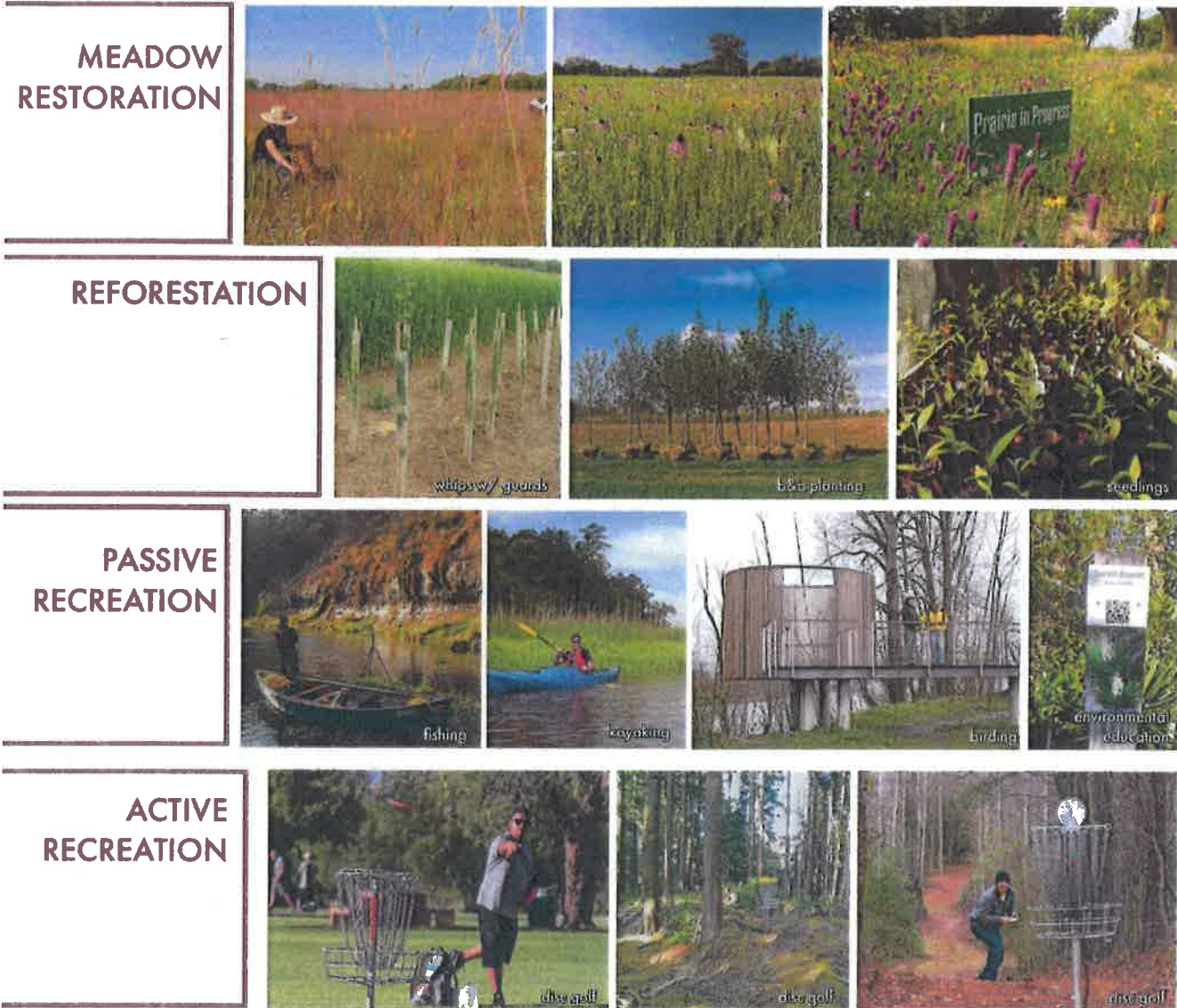
BOARDWALK



EAST PARK: PROGRAM CONSIDERATIONS

A REGIONAL SCALE PARK FOR EXPERIENCING NATURE, GATHERING,
SOCIALIZING & RECREATING!

The City of St. Joseph is refining the design for East Park to meet the
community's growing needs.



PHASE 1 INITIAL DEVELOPMENT:

These program elements were mentioned in the public open house, scored highest in the community survey, and meet criteria described in the 2008 Master Parks Plan.

Phase 1 naturalization projects should be started at the soonest possible time as funding allows; tree and meadow establishment will be most cost beneficial if started from younger plants which have more time to root before the park is opened.

EAST PARK: PROGRAM CONSIDERATIONS

A REGIONAL SCALE PARK FOR EXPERIENCING NATURE, GATHERING,
SOCIALIZING & RECREATING!

The City of St. Joseph is refining the design for East Park to meet the
community's growing needs.

