



# STATE OF MINNESOTA

## Office of Governor Mark Dayton

130 State Capitol ♦ 75 Rev. Dr. Martin Luther King Jr. Boulevard ♦ Saint Paul, MN 55155

February 13, 2017

Representative Sarah Anderson, Chair  
House State Government Finance Committee  
583 State Office Building  
Saint Paul, Minnesota 55155

Dear Representative Anderson,

I have enclosed and attached the complete response to your request for data in preparation for our presentation of the budget for the Office of the Governor on February 16, 2017.

Sincerely,

A handwritten signature in cursive script that reads "Jaime Tincher".

Jaime Tincher  
Chief of Staff

Office of Governor Mark Dayton and Lt. Governor Tina Smith

Item A (1) - That detailed information can be found in Governor Dayton's budget recommendations for the Governor's Office. <https://mn.gov/mmb-stat/documents/budget/2018-19-biennial-budget-books/governors-recommendations-january-2017/governors-office.pdf>

Item A (2) - Our office does not receive federal funds.

Item A (3) - Our office does not have any open appropriations.

Item B - Our office does not have an IDC.

Item C- Please see the "Interagency Payments" tab on the attached spreadsheet.

Item D - That detailed information can be found in Governor Dayton's budget recommendations for the Governor's Office. <https://mn.gov/mmb-stat/documents/budget/2018-19-biennial-budget-books/governors-recommendations-january-2017/governors-office.pdf>

Item E (1) - Organization Chart is attached.

Item E (2) - Our office has no pending positions.

Item E (3) - Please see "FTE by Fund" tab in the attached spreadsheet.

Item E (4) - Please see the "FTE by Bargaining Unit" tab in the attached spreadsheet.

Item E (5) - Our office does not have any employees in the classes listed in items "a, b, c and d".

Item F - I have examined our budget and have determined that no downward adjustments can be made. I recommend full adoption of Governor Dayton's budget recommendation for the Office of the Governor.

Item G (1) - Our office is currently not engaged in rulemaking but the Governor has the final signoff on an agencies proposed rule, by statute.

Item G (2) - Our Office does not anticipate any federal funding.

Item G (3) - Please see "Transfers" tab on the attached spreadsheet.

Item G (4) - From 2011 to 2014, our Office provided a vehicle for the Governor and the Lieutenant Governor. Since 2015, we have provided only a vehicle for the Governor. In 2016, we added one fleet car that is shared amongst our Staff. Please see the chart on the following page.

Appropriation Type	AGENCY	AGENCY DESCR	FUND CODE	FUND DESCR	APPROPID	APPROPRIATION DESCR	LEGAL CITE
NONE FOR GOVERNOR'S OFFICE							

**Unbalanced Transfers**

Returns only those transfers within the selected agency where the Journal ID does NOT sum to zero. This identifies only those transfers (in and out) that originate from, or are sent to, other agencies.

Time run: 2/7/2017 3:42:51 PM

Agency: **G39 - Governors Office**  
 Budget FY: **2012**

Fund Cd	Trans	Journal Id	Approp Id	Name	Posted Date	Transfer Amt	Description	Legal Cite 1	Legal Cite 2
2001	Transfer:0000038639		G391300	Governor's Spec Revenue	8/23/2011	150,000		111.010.01.003.000	
2001	Transfer:0000038746		G391300	Governor's Spec Revenue	8/23/2011	10,000		111.010.01.003.000	
2001	Transfer:0000039814		G391300	Governor's Spec Revenue	8/24/2011	20,000		111.010.01.003.000	
2001	Transfer:0000039827		G391300	Governor's Spec Revenue	8/24/2011	10,000		111.010.01.003.000	
2001	Transfer:0000039830		G391300	Governor's Spec Revenue	8/24/2011	10,000		111.010.01.003.000	
2001	Transfer:0000039901		G391300	Governor's Spec Revenue	8/31/2011	25,000		111.010.01.003.000	
2001	Transfer:0000040814		G391300	Governor's Spec Revenue	8/26/2011	25,000		111.010.01.003.000	
2001	Transfer:0000040916		G391300	Governor's Spec Revenue	8/25/2011	15,000		111.010.01.003.000	
2001	Transfer:0000040917		G391300	Governor's Spec Revenue	8/26/2011	10,000		111.010.01.003.000	
2001	Transfer:0000040984		G391300	Governor's Spec Revenue	8/26/2011	25,000		111.010.01.003.000	
2001	Transfer:0000040989		G391300	Governor's Spec Revenue	8/25/2011	15,000		111.010.01.003.000	
2001	Transfer:0000041790		G391300	Governor's Spec Revenue	8/26/2011	50,000		111.010.01.003.000	
2001	Transfer:0000041790		G391300	Governor's Spec Revenue	8/26/2011	60,000		111.010.01.003.000	
2001	Transfer:0000041876		G391300	Governor's Spec Revenue	8/26/2011	25,000		111.010.01.003.000	
2001	Transfer:0000050686		G391300	Governor's Spec Revenue	8/30/2011	15,000		111.010.01.003.000	
2001	Transfer:0000050821		G391300	Governor's Spec Revenue	8/30/2011	35,000		111.010.01.003.000	
2001	Transfer:0000050828		G391300	Governor's Spec Revenue	8/30/2011	10,000		111.010.01.003.000	
2001	Transfer:0000050832		G391300	Governor's Spec Revenue	8/29/2011	20,000		111.010.01.003.000	
2001	Transfer:0000053902		G391300	Governor's Spec Revenue	9/14/2011	25,000		111.010.01.003.000	
2001	Transfer:0000055109		G391300	Governor's Spec Revenue	9/1/2011	35,000		111.010.01.003.000	
2001	Transfer:0000070115		G391300	Governor's Spec Revenue	9/12/2011	25,000		111.010.01.003.000	
2001	Transfer:0000070453		G391300	Governor's Spec Revenue	9/13/2011	35,000		111.010.01.003.000	
	<b>Grand Total</b>				9/14/2011	<b>685,000</b>			

Agency: **G39 - Governors Office**  
 Budget FY: **2013**

Fund Cd	Trans	Journal Id	Approp Id	Name	Posted Date	Transfer Amt	Description	Legal Cite 1	Legal Cite 2
2001	Transfer:0000544498		G391300	Governor's Spec Revenue	7/2/2012	25,000		111.010.01.003.000	
2001	Transfer:0000544531		G391300	Governor's Spec Revenue	7/2/2012	150,000		111.010.01.003.000	
2001	Transfer:0000544553		G391300	Governor's Spec Revenue	7/3/2012	15,000		111.010.01.003.000	
2001	Transfer:0000544695		G391300	Governor's Spec Revenue	7/3/2012	15,000		111.010.01.003.000	
2001	Transfer:0000544701		G391300	Governor's Spec Revenue	7/3/2012	10,000		111.010.01.003.000	
2001	Transfer:0000544974		G391300	Governor's Spec Revenue	7/2/2012	20,000		111.010.01.003.000	
2001	Transfer:0000545001		G391300	Governor's Spec Revenue	7/2/2012	10,000		111.010.01.003.000	
2001	Transfer:0000545602		G391300	Governor's Spec Revenue	7/18/2012	10,000		111.010.01.003.000	
2001	Transfer:0000545015		G391300	Governor's Spec Revenue	7/2/2012	10,000		111.010.01.003.000	
2001	Transfer:0000546271		G391300	Governor's Spec Revenue	7/5/2012	35,000		111.010.01.003.000	
2001	Transfer:0000546408		G391300	Governor's Spec Revenue	7/3/2012	20,000		111.010.01.003.000	
2001	Transfer:0000549068		G391300	Governor's Spec Revenue	7/6/2012	50,000		111.010.01.003.000	
2001	Transfer:0000549251		G391300	Governor's Spec Revenue	7/9/2012	25,000		111.010.01.003.000	

Fund Cd	Trans	Journal Id	Journal Id	Approp Id	Name	Posted Date	Transfer Amt	Description	Legal Cite 1
2001	Transfer	0000550524		G391300	Governor's Spec Revenue	7/9/2012	25,000		111.010.01.003.000
2001	Transfer	0000550543		G391300	Governor's Spec Revenue	7/17/2012	35,000		111.010.01.003.000
2001	Transfer	0000550609		G391300	Governor's Spec Revenue	7/9/2012	10,000		111.010.01.003.000
2001	Transfer	0000550625		G391300	Governor's Spec Revenue	7/9/2012	25,000		111.010.01.003.000
2001	Transfer	0000553314		G391300	Governor's Spec Revenue	7/11/2012	60,000		111.010.01.003.000
2001	Transfer	0000553349		G391300	Governor's Spec Revenue	7/11/2012	35,000		111.010.01.003.000
2001	Transfer	0000554877		G391300	Governor's Spec Revenue	7/12/2012	35,000		111.010.01.003.000
2001	Transfer	0000572776		G391300	Governor's Spec Revenue	7/16/2012	25,000		111.010.01.003.000
2001	Transfer	0000575549		G391300	Governor's Spec Revenue	7/18/2012	15,000		111.010.01.003.000
2001	Transfer	0000576993		G391300	Governor's Spec Revenue	7/19/2012	25,000		111.010.01.003.000
<b>Grand Total</b>							<b>685,000</b>		

Agency: **G39 - Governors Office**

Budget FY: **2014**

Fund Cd	Trans Type	Journal Id	Journal Id	Approp Id	Name	Posted Date	Transfer Amt	Description	Legal Cite 1
2001	Transfer	0001131333		G391300	Governor's Spec Revenue	7/1/2013	43,505		MS 471.59
2001	Transfer	0001131358		G391300	Governor's Spec Revenue	7/1/2013	62,150		MS 471.59
2001	Transfer	0001131459		G391300	Governor's Spec Revenue	7/1/2013	31,075		MS 471.59
2001	Transfer	0001131475		G391300	Governor's Spec Revenue	7/1/2013	6,215		MS 471.59
2001	Transfer	0001131477		G391300	Governor's Spec Revenue	7/1/2013	18,645		MS 471.59
2001	Transfer	0001131484		G391300	Governor's Spec Revenue	7/1/2013	12,430		MS 471.59
2001	Transfer	0001131678		G391300	Governor's Spec Revenue	7/1/2013	43,505		MS 471.59
2001	Transfer	0001131744		G391300	Governor's Spec Revenue	7/8/2013	12,450		MS 471.59
2001	Transfer	0001131845		G391300	Governor's Spec Revenue	7/1/2013	6,215		MS 471.59
2001	Transfer	0001132043		G391300	Governor's Spec Revenue	7/1/2013	74,600		MS 471.59
2001	Transfer	0001132044		G391300	Governor's Spec Revenue	7/2/2013	31,075		MS 471.59
2001	Transfer	0001132247		G391300	Governor's Spec Revenue	7/2/2013	31,075		MS 471.59
2001	Transfer	0001132443		G391300	Governor's Spec Revenue	7/2/2013	187,000		MS 471.59
2001	Transfer	0001133447		G391300	Governor's Spec Revenue	7/3/2013	10,000		MS 471.59
2001	Transfer	0001133514		G391300	Governor's Spec Revenue	7/2/2013	43,505		MS 471.59
2001	Transfer	0001135166		G391300	Governor's Spec Revenue	7/3/2013	25,000		MS 471.59
2001	Transfer	0001135171		G391300	Governor's Spec Revenue	7/3/2013	14,720		MS 471.59
2001	Transfer	0001135516		G391300	Governor's Spec Revenue	7/16/2013	24,860		MS 471.59
2001	Transfer	0001139799		G391300	Governor's Spec Revenue	7/9/2013	18,645		MS 471.59
2001	Transfer	0001143219		G391300	Governor's Spec Revenue	7/11/2013	31,075		MS 471.59
2001	Transfer	0001144715		G391300	Governor's Spec Revenue	7/12/2013	(74,600)		MS 471.59
2001	Transfer	0001147734		G391300	Governor's Spec Revenue	7/12/2013	74,600		MS 471.59
2001	Transfer	0001163968		G391300	Governor's Spec Revenue	7/17/2013	18,645		MS 471.59
2001	Transfer	0001195496		G391300	Governor's Spec Revenue	7/30/2013	31,075		MS 471.59
2001	Transfer	0001197041		G391300	Governor's Spec Revenue	8/1/2013	(550)		MS 471.59
2001	Transfer	0001200674		G391300	Governor's Spec Revenue	8/6/2013	31,075		MS 471.59
2001	Transfer	0001201839		G391300	Governor's Spec Revenue	8/5/2013	43,505		MS 471.59
<b>Grand Total</b>							<b>851,495</b>		

Agency: **G39 - Governors Office**

Budget FY: **2015**

Fund Cd	Trans Type	Journal Id	Journal Id	Approp Id	Name	Posted Date	Transfer Amt	Legal Cite 1	
1000	Transfer Out	0002130656		G391000	Governor's Office	3/11/2015			
2001	Transfer In	0001726935		G391300	Governor's Spec Revenue Fund	7/1/2014			
							(750)	Interagency transfer for Statewide for Executive Recruiter	
							57,600	MS 471.59	

2001	Transfer In	0001726937	G391300	Governor's Spec Revenue Fund	7/1/2014	41,100MS 471.59
2001	Transfer In	0001727193	G391300	Governor's Spec Revenue Fund	7/8/2014	41,100MS 471.59
2001	Transfer In	0001727384	G391300	Governor's Spec Revenue Fund	7/1/2014	41,100MS 471.59
2001	Transfer In	0001727408	G391300	Governor's Spec Revenue Fund	7/1/2014	82,300MS 471.59
2001	Transfer In	0001727595	G391300	Governor's Spec Revenue Fund	7/1/2014	41,100MS 471.59
2001	Transfer In	0001727818	G391300	Governor's Spec Revenue Fund	7/2/2014	24,700MS 471.59
2001	Transfer In	0001728904	G391300	Governor's Spec Revenue Fund	7/2/2014	8,250MS 471.59
2001	Transfer In	0001728911	G391300	Governor's Spec Revenue Fund	7/2/2014	8,250MS 471.59
2001	Transfer In	0001729120	G391300	Governor's Spec Revenue Fund	7/2/2014	57,600MS 471.59
2001	Transfer In	0001730583	G391300	Governor's Spec Revenue Fund	7/3/2014	32,900MS 471.59
2001	Transfer In	0001731722	G391300	Governor's Spec Revenue Fund	7/8/2014	24,660MS 471.59
2001	Transfer In	0001731765	G391300	Governor's Spec Revenue Fund	7/7/2014	24,700MS 471.59
2001	Transfer In	0001732037	G391300	Governor's Spec Revenue Fund	7/8/2014	57,600MS 471.59
2001	Transfer In	0001734500	G391300	Governor's Spec Revenue Fund	7/9/2014	57,600MS 471.59
2001	Transfer In	0001734510	G391300	Governor's Spec Revenue Fund	7/10/2014	41,100MS 471.59
2001	Transfer In	0001735611	G391300	Governor's Spec Revenue Fund	7/10/2014	16,500MS 471.59
2001	Transfer In	0001756215	G391300	Governor's Spec Revenue Fund	7/15/2014	186,450MS 471.59
2001	Transfer In	0001756219	G391300	Governor's Spec Revenue Fund	7/16/2014	60,550MS 471.59
2001	Transfer In	0001759146	G391300	Governor's Spec Revenue Fund	7/17/2014	16,440MS 471.59
2001	Transfer In	0001763695	G391300	Governor's Spec Revenue Fund	7/23/2014	25,000MS 471.59
2001	Transfer In	0001763738	G391300	Governor's Spec Revenue Fund	7/23/2014	25,000MS 471.59
2001	Transfer In	0001763741	G391300	Governor's Spec Revenue Fund	7/23/2014	15,800MS 471.59
2001	Transfer In	0001764868	G391300	Governor's Spec Revenue Fund	7/23/2014	41,100MS 471.59
<b>Grand Total</b>						<b>1,027,750</b>

Agency: **G39 - Governors Office**  
 Budget FY: **2016**

Fund Cd	Trans Type	Journal Id	Approp Id	Maine	Posted Date	Transfer Amt	Legal Cite 1
1000	Transfer Out	0002325729	G391000	Governor's Office	7/31/2015	(10,000)	Interagency transfer for Statewide for Executive Recruiter
2001	Transfer In	0002323224	G391300	Governor's Spec Revenue Fund	7/6/2015	16,500MS 471.59	
2001	Transfer In	0002324834	G391300	Governor's Spec Revenue Fund	7/2/2015	41,100MS 471.59	
2001	Transfer In	0002324859	G391300	Governor's Spec Revenue Fund	7/7/2015	24,660MS 471.59	
2001	Transfer In	0002324861	G391300	Governor's Spec Revenue Fund	7/7/2015	16,440MS 471.59	
2001	Transfer In	0002325092	G391300	Governor's Spec Revenue Fund	7/6/2015	57,600MS 471.59	
2001	Transfer In	0002325303	G391300	Governor's Spec Revenue Fund	7/8/2015	41,100MS 471.59	
2001	Transfer In	0002325372	G391300	Governor's Spec Revenue Fund	7/7/2015	8,250MS 471.59	
2001	Transfer In	0002325374	G391300	Governor's Spec Revenue Fund	7/7/2015	8,250MS 471.59	
2001	Transfer In	0002325454	G391300	Governor's Spec Revenue Fund	7/6/2015	57,600MS 471.59	
2001	Transfer In	0002327244	G391300	Governor's Spec Revenue Fund	7/6/2015	24,700MS 471.59	
2001	Transfer In	0002327255	G391300	Governor's Spec Revenue Fund	7/7/2015	57,600MS 471.59	
2001	Transfer In	0002327446	G391300	Governor's Spec Revenue Fund	7/7/2015	41,100MS 471.59	
2001	Transfer In	0002339661	G391300	Governor's Spec Revenue Fund	7/7/2015	82,300MS 471.59	
2001	Transfer In	0002328981	G391300	Governor's Spec Revenue Fund	7/7/2015	32,900MS 471.59	
2001	Transfer In	0002328983	G391300	Governor's Spec Revenue Fund	7/8/2015	247,000MS 471.59	
2001	Transfer In	0002329131	G391300	Governor's Spec Revenue Fund	7/7/2015	17,500MS 471.59	
2001	Transfer In	0002329134	G391300	Governor's Spec Revenue Fund	7/7/2015	17,500MS 471.59	
2001	Transfer In	0002329141	G391300	Governor's Spec Revenue Fund	7/7/2015	13,300MS 471.59	

Fund Cd	Trans Type	Journal Id	Approp Id	Name	Posted Date	Transfer Amt	Description	Legal Cite 1
2001	Transfer In	0002329143	6391300	Governor's Spec Revenue Fund	7/7/2015	17,500	MS 471.59	
2001	Transfer In	0002334025	6391300	Governor's Spec Revenue Fund	7/16/2015	41,100	MS 471.59	
2001	Transfer In	0002336885	6391300	Governor's Spec Revenue Fund	7/27/2015	57,600	MS 471.59	
2001	Transfer In	0002360438	6391300	Governor's Spec Revenue Fund	7/23/2015	41,100	MS 471.59	
2001	Transfer In	0002405802	6391300	Governor's Spec Revenue Fund	8/12/2015	24,700	MS 471.59	
2001	Transfer In	0002460483	6391300	Governor's Spec Revenue Fund	9/22/2015	37,276	MS 471.59	
2001	Transfer In	0002460491	6391300	Governor's Spec Revenue Fund	9/22/2015	10,493	MS 471.59	
2001	Transfer In	0002460495	6391300	Governor's Spec Revenue Fund	9/22/2015	1,437	MS 471.59	
2001	Transfer In	0002473827	6391300	Governor's Spec Revenue Fund	9/23/2015	41,100	MS 471.59	
<b>Grand Total</b>						<b>1,067,706</b>		

Agency: **G39 - Governors Office**  
 Budget FY: **2017**

Fund Cd	Trans Type	Journal Id	Approp Id	Name	Posted Date	Transfer Amt	Description	Legal Cite 1
1000	Transfer Out	0002965607	6391000	Governor's Office	7/20/2016	(20,000)	Interagency transfer for Statewide for Executive Recruiter	
2001	Transfer In	0002936436	6391300	Governor's Spec Revenue Fund	7/1/2016	41,100	MS 471.59	
2001	Transfer In	0002936442	6391300	Governor's Spec Revenue Fund	7/1/2016	26,278	MS 471.59	
2001	Transfer In	0002936475	6391300	Governor's Spec Revenue Fund	7/1/2016	82,300	MS 471.59	
2001	Transfer In	0002936476	6391300	Governor's Spec Revenue Fund	7/1/2016	26,778	MS 471.59	
2001	Transfer In	0002936560	6391300	Governor's Spec Revenue Fund	7/1/2016	247,000	MS 471.59	
2001	Transfer In	0002936719	6391300	Governor's Spec Revenue Fund	7/1/2016	24,700	MS 471.59	
2001	Transfer In	0002936766	6391300	Governor's Spec Revenue Fund	7/1/2016	41,100	MS 471.59	
2001	Transfer In	0002936884	6391300	Governor's Spec Revenue Fund	7/1/2016	41,100	MS 471.59	
2001	Transfer In	0002939021	6391300	Governor's Spec Revenue Fund	7/5/2016	16,500	MS 471.59	
2001	Transfer In	0002938136	6391300	Governor's Spec Revenue Fund	7/5/2016	57,600	MS 471.59	
2001	Transfer In	0002939773	6391300	Governor's Spec Revenue Fund	7/7/2016	41,100	MS 471.59	
2001	Transfer In	0002939817	6391300	Governor's Spec Revenue Fund	7/6/2016	32,900	MS 471.59	
2001	Transfer In	0002939915	6391300	Governor's Spec Revenue Fund	7/7/2016	57,600	MS 471.59	
2001	Transfer In	0002941110	6391300	Governor's Spec Revenue Fund	7/12/2016	41,100	MS 471.59	
2001	Transfer In	0002941320	6391300	Governor's Spec Revenue Fund	7/7/2016	8,250	MS 471.59	
2001	Transfer In	0002941325	6391300	Governor's Spec Revenue Fund	7/7/2016	8,250	MS 471.59	
2001	Transfer In	0002941423	6391300	Governor's Spec Revenue Fund	7/7/2016	26,278	MS 471.59	
2001	Transfer In	0002941475	6391300	Governor's Spec Revenue Fund	7/7/2016	41,100	MS 471.59	
2001	Transfer In	0002955813	6391300	Governor's Spec Revenue Fund	7/12/2016	57,600	MS 471.59	
2001	Transfer In	0002955830	6391300	Governor's Spec Revenue Fund	7/12/2016	17,500	MS 471.59	
2001	Transfer In	0002955831	6391300	Governor's Spec Revenue Fund	7/12/2016	17,500	MS 471.59	
2001	Transfer In	0002955832	6391300	Governor's Spec Revenue Fund	7/12/2016	13,300	MS 471.59	
2001	Transfer In	0002955834	6391300	Governor's Spec Revenue Fund	7/12/2016	17,500	MS 471.59	
2001	Transfer In	0002958702	6391300	Governor's Spec Revenue Fund	7/13/2016	26,276	MS 471.59	
2001	Transfer In	0002958745	6391300	Governor's Spec Revenue Fund	7/13/2016	41,100	MS 471.59	
2001	Transfer In	0002959202	6391300	Governor's Spec Revenue Fund	7/18/2016	69,752	MS 471.59	
2001	Transfer In	0002959213	6391300	Governor's Spec Revenue Fund	7/18/2016	29,148	MS 471.59	
2001	Transfer In	0002960562	6391300	Governor's Spec Revenue Fund	7/14/2016	57,600	MS 471.59	
2001	Transfer In	0002960932	6391300	Governor's Spec Revenue Fund	7/15/2016	24,700	MS 471.59	
2001	Transfer In	0003273078	6391700	Workforce Career Staffing	1/20/2017	150,000	MSPWin grant	MS 471.59 3
<b>Grand Total</b>						<b>1,363,011</b>		

## PAYING AGENCY

Governor's Office

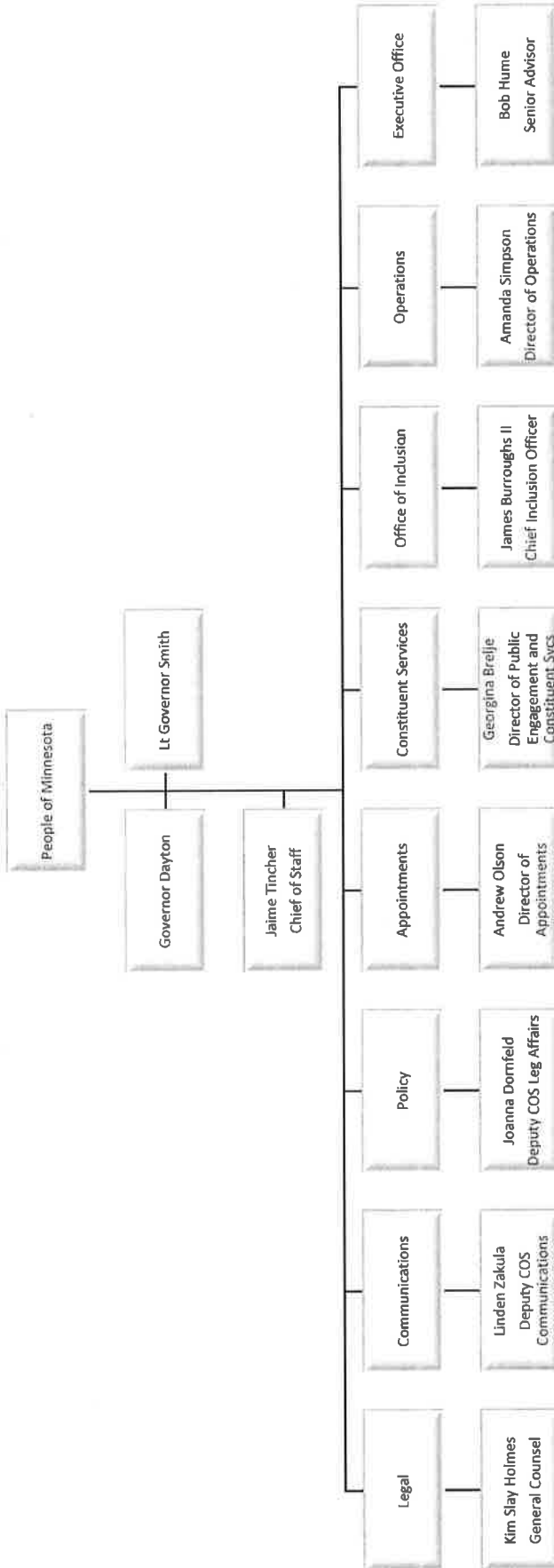
Paid To	2012	2013	2014	2015	2016	2017
ADMINISTRATION DEPT	\$284,830.82	\$284,125.36	\$277,910.94	\$325,277.37	\$327,727.42	\$174,317.09
EMPLOYMENT & ECONOMIC DEVELOPMENT DEPT						\$1,400.00
HISTORICAL SOCIETY		\$347.63	-\$347.63			
HUMAN SERVICES DEPT		\$94.35				
MINNESOTA MANAGEMENT & BUDGET		\$4,242.00	\$1,255.29	\$250.00	\$2,521.45	\$545.63
MMB NON OPERATING	\$3,986.00	\$1,702.00	\$757.34			
MN IT SERVICES	\$50,532.15	\$52,988.29	\$57,328.12	\$59,722.15	\$64,192.95	\$36,007.26
PUBLIC SAFETY DEPT	\$4,022.79	-\$5.50	\$312.00	\$571.00	\$4,156.74	\$121.00
TRANSPORTATION DEPT	\$10,386.43	\$18,953.70	\$7,160.50	\$18,223.89	\$8,697.80	\$8,144.66
<b>Grand Total</b>	<b>\$353,758.19</b>	<b>\$362,447.83</b>	<b>\$344,376.56</b>	<b>\$404,044.41</b>	<b>\$407,296.36</b>	<b>\$220,535.64</b>

## RECEIVING AGENCY

Governor's Office

Paid By	2012	2013	2014	2015	2016	2017
Administration Department		\$55.00	\$81.00	\$1,374.37	\$2,148.45	\$246.68
Commerce Department						\$89.00
Corrections Department				\$738.80	\$21,375.00	\$82.78
Employment & Economic Develop	\$3,371.01	\$2,034.20	\$3,081.52	\$280.93	\$4,735.15	\$3,129.51
Investment Board			\$718.04			
Military Affairs Department		\$5,283.30				\$12,474.21
Minnesota Management & Budget				\$206.29	\$240.95	
Natural Resources Department				\$1,580.46	\$1,334.52	\$18.88
Pollution Control Agency					\$124.44	
Public Safety Department	\$30,248.00			\$24,500.00		
Revenue Department	\$0.00					
Transportation Department		\$736.64		\$99,498.85	\$49,694.00	\$62.70
<b>Grand Total</b>	<b>\$33,674.01</b>	<b>\$8,135.14</b>	<b>\$5,912.73</b>	<b>\$149,589.98</b>	<b>\$56,375.74</b>	<b>\$15,857.08</b>





Sum of History FTE		Year								
Agency ID	Fund	2009	2010	2011	2012	2013	2014	2015	2016	
G39	100	33.81	30.66	29.87	2.65					
	1000				25.74	30.65	29.25	30.05	28.99	
	200	1.98	5.04	0.29						
	2001				8.11	6.23	9.46	12.28	14.38	
	211			2.22						
<b>G39 Total</b>		<b>35.79</b>	<b>35.70</b>	<b>32.38</b>	<b>36.50</b>	<b>36.88</b>	<b>38.71</b>	<b>42.34</b>	<b>43.37</b>	

**Sum of History FTE**

	<b>AFSCME Clerical</b>	<b>Excluded, All Others</b>	<b>Managerial</b>	<b>MAPE</b>	<b>MMA</b>	<b>Grand Total</b>
G39		43.29		0.04	0.04	43.37

**Hourly Compensation Rate**

**Deputy Commissioner, Jan. 2009-20:**                      **2009 2010 2011 2012 2013 2014 2015 2016 Grand Total**

---

NONE FOR GOVERNOR'S OFFICE

**Hourly Compensation Rate**

**Managerial Plan Employees, Jan. 2009-2017**

**2009 2010 2011 2012 2013 2014 2015 2016**

NONE FOR GOVERNOR'S OFFICE

**Hourly Compensation Rate**

**Asst Commissioner, Jan. 2009-2017**

**2009 2010 2011 2012 2013 2014 2015 2016**

NONE FOR GOVERNOR'S OFFICE

Item G (5) – There are no pending lawsuits against the Office of the Governor.

<b><u>Governor's Office Vehicles 2011-Present</u></b>
<b>FY 11</b>
<b>Governor's 2011 Suburban</b>
<b>Lt. Governor's 2011 Jeep</b>
<b>FY 12</b>
<b>Governor Suburban</b>
<b>Lt. Governor Jeep</b>
<b>FY 13</b>
<b>Governor Suburban</b>
<b>Lt. Governor Jeep</b>
<b>FY 14</b>
<b>Governor Suburban</b>
<b>Lt. Governor Jeep</b>
<b>FY 15</b>
<b>Governor's 2011 Suburban</b>
<b>Lt. Governor's 2011 Jeep</b>
<b>FY 16</b>
<b>Governor's 2016 Suburban</b>
<b>FY 17</b>
<b>Governor's 2016 Suburban</b>
<b>Office Fleet Car</b>