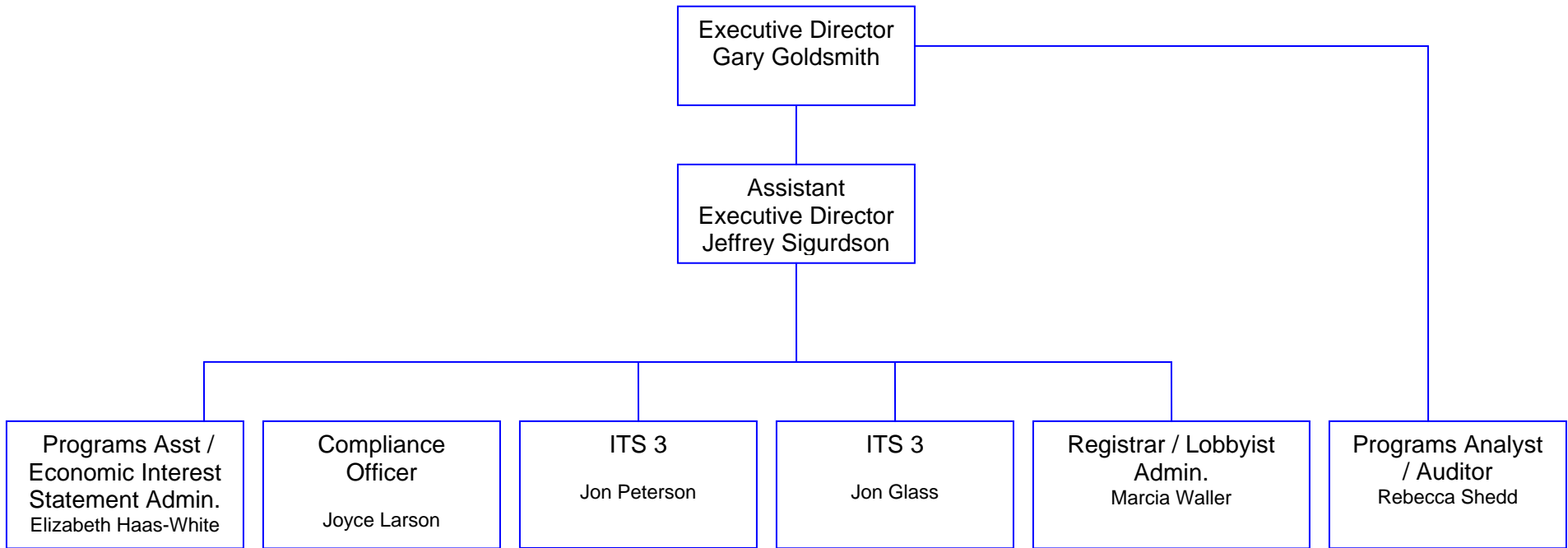


# CAMPAIGN FINANCE AND PUBLIC DISCLOSURE BOARD AGENCY ORGANIZATION CHART



# State Elections Campaign Fund (Public Subsidy Program)

Consists of two accounts: the Party Account and the General Account

## Tax Checkoff Appropriation

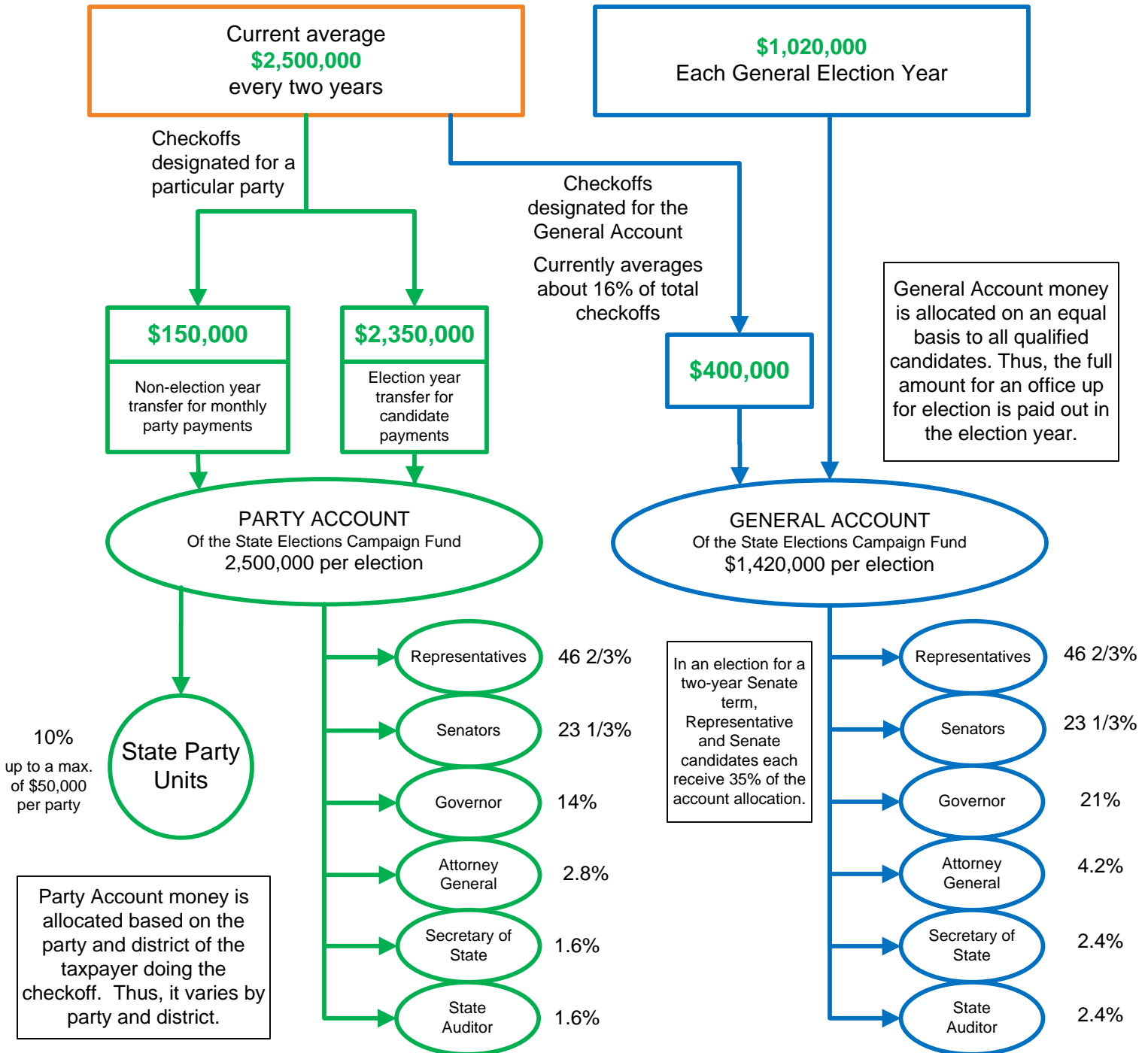
10A.31, subd. 4(a)

Taxpayer directs \$5 from the general fund of the state to the State Elections Campaign Fund. 3% retained in general fund of the state. \$5.00 checkoff yields \$4.85 to the State Elections Campaign Fund.

## Statutory Appropriation

10A.31, subd. 4(a)

An appropriation from the general fund of the state made in each election year.



Money allocated for an office that is not up for election carries forward to the next year that office is on the ballot.

Money not paid to legislative candidates reverts to the general fund of the state. Money not paid to constitutional office candidates is reallocated to legislative races in the next election

**Campaign Finance and Public Disclosure Board  
Historical Salaries**

Year	Amount
2006	581,072
2007	593,725
2008	595,291
2009	586,360
2010	561,146
2011	563,707



**CAMPAIGN FINANCE AND PUBLIC DISCLOSURE BOARD**

OBJ	Budget Detail	2010-11			
		Actual		Budgeted	
		FTE	FY 10	FTE	FY 11
	Info.Tech. Spec. III	1		1	
	Executive Director	1		1	
	Prog. Asst / EIS admin.	0.5		1	
	Compliance Officer	1		1	
	Info. Tech. Specialist III	1		1	
	Prog. analyst/auditor (MA-2)	1		1	
	Assistant Director	1		1	
	Registrar/ Lobbyist admin.	1		1	
	Office Supervisor	0.1			
<b>1E0</b>	<b>Salary and Fringe</b>	<b>7.6</b>	<b>561,144</b>	<b>8</b>	<b>563,707</b>
	<b>Other 1 Group obj code</b>				
<b>1E0</b>	Vacation/Sick Leave Payout				0
<b>1E30</b>	Unemployment Compensation				5,000
<b>1E40</b>	Worker's Comp (admin costs)				206
<b>1E20</b>	Board Per Diem				3,355
	<b>Total 1E0</b>		<b>19,693</b>		<b>8,561</b>
	<b>Obj Code 1A0 - 1F0 Total</b>		<b>580,837</b>		<b>572,268</b>

2012-13			
Budget			
FTE	FY 12	FTE	FY 13
1		1	
1		1	
1		1	
1		1	
1		1	
1		1	
1		1	
1		1	
8	<b>593,635</b>	8	<b>621,411</b>
	0		0
	5,000		0
	250		250
	4,510		4,510
	<b>9,760</b>		<b>4,760</b>
	<b>603,395</b>		<b>626,171</b>

CAMPAIGN FINANCE AND PUBLIC DISCLOSURE BOARD

OBJ	Budget Detail	2010-11				2012-13			
			Actual		Budgeted	Budget			
	<b>OPERATING EXPENSES</b>								
2A	Space Rental, Maint, Util		40,962		42,920		45,550		48,225
2B0	Repairs, Maint.		0		12,100		600		600
2C	<b>Printing and Advertising</b>								
	Printing State Register (rulemaking)				2,500		2,500		1,000
	Letterhead / env				2,500		600		0
	Printing Statute books				596		0		600
2C	<b>Printing Total</b>		<b>214</b>		<b>5,596</b>		<b>3,100</b>		<b>1,600</b>
2D	<b>Prof/Tech svcs</b>								
	IT Training				5,000		5,000		0
	Court Reporter				1,000		250		500
	MN State IT Symposium				930		2,000		2,000
2D	<b>Total</b>		<b>794</b>		<b>6,930</b>		<b>7,250</b>		<b>2,500</b>
2E	<b>Computer Systems and Svcs</b>								
2E00	OET computing services				2,340		3,540		3,540
2E20	Software license / subscr				8,789		5,675		5,035
2E60	Online Subscr (fpr debt collection)				359		400		400
2E	<b>Total</b>		<b>2,379</b>		<b>11,488</b>		<b>9,615</b>		<b>8,975</b>
2F0	<b>Communications</b>								
2F0	Central Mail - Postage				10,009		8,000		9,000
2F0	OET Computing Services				2,149		1,700		1,700
2F0	OET - Voice Services				5,929		4,100		4,100
	OET contingency				0				
2F0	<b>Postage / Telephone Total</b>		<b>15,007</b>		<b>18,087</b>		<b>13,800</b>		<b>14,800</b>
2G0	<b>Travel - In state</b>		<b>2,597</b>		<b>2,765</b>		<b>3,000</b>		<b>3,000</b>
2H0	<b>Out-state Travel Total</b>		<b>2,747</b>		<b>3,915</b>		<b>3,700</b>		<b>3,700</b>
2J0	<b>Suplies</b>								
2J00	General office supplies				6,817		6,900		6,900
2J01	Computer parts and supplies				2,565		1,000		1,000
2J0	<b>Supplies Total</b>		<b>3,983</b>		<b>9,382</b>		<b>7,900</b>		<b>7,900</b>
2K0	<b>Equipment</b>								
2K00	Equipment purchase				26,788		2,000		2,000
2K30	Equipment rent - copier				4,847		4,000		4,000
2K0	<b>Equipment Total</b>		<b>6,409</b>		<b>31,635</b>		<b>6,000</b>		<b>6,000</b>
2L0	<b>Staff Development Total</b>		<b>2,810</b>		<b>2,560</b>		<b>2,100</b>		<b>2,100</b>
2M0	<b>Other Purch Services</b>		<b>2,209</b>		<b>13,031</b>		<b>730</b>		<b>5,930</b>
2S0	<b>OAH Rules Review</b>		<b>170</b>		<b>2,500</b>		<b>1,500</b>		<b>1,000</b>
	<b>OPERATING EXP. SUB-TOTAL</b>		<b>80,281</b>		<b>162,909</b>		<b>104,845</b>		<b>106,330</b>
	<b>TOTAL</b>		<b>661,118</b>		<b>735,177</b>		<b>708,240</b>		<b>732,501</b>
	<b>APPROPRIATION</b>		<b>748,000</b>		<b>748,000</b>		<b>725,000</b>		<b>725,000</b>
	<b>CARRY FORWARD FROM FY 10</b>		<b>0</b>		<b>58,882</b>				
	<b>Appropriation reduction</b>		<b>-28,000</b>		<b>-8,000</b>				
	<b>Reduction - rent</b>		<b>0</b>		<b>-1,000</b>				
	<b>TOTAL</b>		<b>720,000</b>		<b>797,882</b>		<b>725,000</b>		<b>725,000</b>
	<b>NET (SHORTAGE) / SURPLUS</b>		<b>58,882</b>		<b>62,705</b>		<b>16,760</b>		<b>-7,501</b>

**CAMPAIGN FINANCE AND PUBLIC DISCL**

OBJ	Budget Detail
	Info.Tech. Spec. III
	Executive Director
	Prog. Asst / EIS admin.
	Compliance Officer
	Info. Tech. Specialist III
	Prog. analyst/auditor (MA-2)
	Assistant Director
	Registrar/ Lobbyist admin.
	Office Supervisor
<b>1E0</b>	<b>Salary and Fringe</b>
	<b>Other 1 Group obj code</b>
<b>1E0</b>	Vacation/Sick Leave Payout
<b>1E30</b>	Unemployment Compensation
<b>1E40</b>	Worker's Comp (admin costs)
<b>1E20</b>	Board Per Diem
	<b>Total 1E0</b>
	<b>Obj Code 1A0 - 1F0 Total</b>

2012-13			
15% Cut			
1.0		1.0	
1.0		1.0	
1.0		1.0	
0.8	Reduced	0.8	Reduced
1.0		1.0	
0.0	Gone	0.0	Gone
1.0		1.0	
0.5	Reduced	0.5	Reduced
<b>6.3</b>	<b>494,363</b>	<b>6.3</b>	<b>517,719</b>
	0		0
	30,000		30,000
	250		250
	3,000		3,000
	<b>33,250</b>		<b>33,250</b>
	<b>527,613</b>		<b>550,969</b>

2012-13			
20% Cut			
FTE	FY 12	FTE	FY 13
1.0		1.0	
1.0		1.0	
1.0		1.0	
0.3	Reduced	0.3	Reduced
1.0		1.0	
0.0	Gone	0.0	Gone
1.0		1.0	
0.0	Gone	0.0	Gone
<b>5.3</b>	<b>427,285</b>	<b>5.3</b>	<b>447,097</b>
	0		0
	60,000		60,000
	250		250
	3,000		3,000
	<b>63,250</b>		<b>63,250</b>
	<b>490,535</b>		<b>510,347</b>

CAMPAIGN FINANCE AND PUBLIC DISCL

OBJ	Budget Detail	2012-13		2012-13	
		15% Cut		20% Cut	
	<b>OPERATING EXPENSES</b>				
2A	Space Rental, Maint, Util	44,875	47,550	44,875	47,550
2B0	Repairs, Maint.	600	600	600	600
2C	<b>Printing and Advertising</b>				
	Printing State Register (rulemaking)	1,500	0	0	0
	Letterhead / env	300	0	300	0
	Printing Statute books	0	300	0	300
2C	<b>Printing Total</b>	<b>1,800</b>	<b>300</b>	<b>300</b>	<b>300</b>
2D	<b>Prof/Tech svcs</b>				
	IT Training	0	0	0	0
	Court Reporter	250	250	250	250
	MN State IT Symposium	0	0	0	0
2D	<b>Total</b>	<b>250</b>	<b>250</b>	<b>250</b>	<b>250</b>
2E	<b>Computer Systems and Svcs</b>				
2E00	OET computing services	3,540	3,540	3,540	3,540
2E20	Software license / subscr	1,650	1,650	650	650
2E60	Online Subscr (fpr debt collection)	400	400	400	400
2E	<b>Total</b>	<b>5,590</b>	<b>5,590</b>	<b>4,590</b>	<b>4,590</b>
2F0	<b>Communications</b>				
2F0	Central Mail - Postage	7,000	7,000	7,000	7,000
2F0	OET Computing Services	1,700	1,700	1,700	1,700
2F0	OET - Voice Services	4,100	4,100	4,100	4,100
	OET contingency	2,000	2,000	0	0
2F0	<b>Postage / Telephone Total</b>	<b>14,800</b>	<b>14,800</b>	<b>12,800</b>	<b>12,800</b>
2G0	<b>Travel - In state</b>	<b>2,000</b>	<b>2,000</b>	<b>2,000</b>	<b>2,000</b>
2H0	<b>Out-state Travel Total</b>	<b>0</b>	<b>0</b>	<b>0</b>	<b>0</b>
2J0	<b>Suplies</b>				
2J00	General office supplies	6,700	6,700	5,200	5,200
2J01	Computer parts and supplies	600	600	0	0
2J0	<b>Supplies Total</b>	<b>7,300</b>	<b>7,300</b>	<b>5,200</b>	<b>5,200</b>
2K0	<b>Equipment</b>				
2K00	Equipment purchase	0	0	0	0
2K30	Equipment rent - copier	4,000	4,000	4,000	4,000
2K0	<b>Equipment Total</b>	<b>4,000</b>	<b>4,000</b>	<b>4,000</b>	<b>4,000</b>
2L0	<b>Staff Development Total</b>	<b>0</b>	<b>0</b>	<b>0</b>	<b>0</b>
2M0	<b>Other Purch Services</b>	<b>230</b>	<b>430</b>	<b>230</b>	<b>430</b>
2S0	<b>OAH Rules Review</b>	<b>1,500</b>	<b>1,000</b>	<b>1,500</b>	<b>1,000</b>
	<b>OPERATING EXP. SUB-TOTAL</b>	<b>82,945</b>	<b>83,820</b>	<b>76,345</b>	<b>78,720</b>
	<b>TOTAL</b>	<b>610,559</b>	<b>634,789</b>	<b>566,880</b>	<b>589,066</b>
	<b>APPROPRIATION</b>	<b>725,000</b>	<b>725,000</b>	<b>725,000</b>	<b>725,000</b>
	<b>CARRY FORWARD FROM FY 10</b>				
	<b>Appropriation reduction</b>	<b>-108,750</b>	<b>-108,750</b>	<b>-145,000</b>	<b>-145,000</b>
	<b>Reduction - rent</b>				
	<b>TOTAL</b>	<b>616,250</b>	<b>616,250</b>	<b>580,000</b>	<b>580,000</b>
	<b>NET (SHORTAGE) / SURPLUS</b>	<b>5,691</b>	<b>-18,539</b>	<b>13,120</b>	<b>-9,066</b>